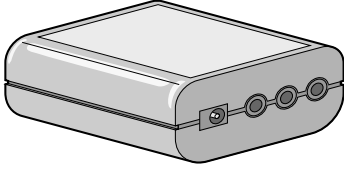


JVC

HS-V1EK

**Supplementary instruction manual
for JLIP Player Software Ver. 1.1**

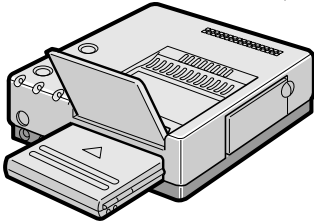
PC Junction Box



To JLIP
connector

3.5 mm
diameter
4-pin cable

To JLIP
connector



GV-PT2 Video Printer

The Video Printer GV-PT2 allows you to print still images captured from the connected image source unit.

- 1** Referring to pg. 10 of the JLIP Player Pack HS-V1's instruction manual,
 - Connect the PC Junction Box to PC.
 - Connect the PC Junction Box to the image source unit equipped with JLIP connector.
- 2** Connect the PC Junction Box to the Video Printer GV-PT2.
- 3** Referring to pg. 12 and 13 of the Video Printer GV-PT2's instruction manual, connect the Video Printer GV-PT2 to the image source unit connected in step 1.

Printing

Before printing, perform the procedure listed below.

- Set VCR to external input.
- Set TV to VIDEO mode so that images from video printer appear.

1 BRING UP VIDEO PRINTER WINDOW

Select "Set-up" from "Video Printer" on the MOVIE PLAYER window.

- The "Video Printer" window appears.
- To view the buttons on the MOVIE PLAYER window, move the "Video Printer" window to the right and up keeping the title bar on the "Video Printer" window clicked.

2 PLAYBACK

Click ► on the MOVIE PLAYER window.

- The "Video Printer" window appears behind the MOVIE PLAYER window.
- To view the "Video Printer" window, click the title bar labelled "Video Printer".

3 STORE SCENE

Click "STORE" on the "Video Printer" window at the scene you want to print.

- The selected scene is stored in memory and appears on the TV monitor.

4 PRINT

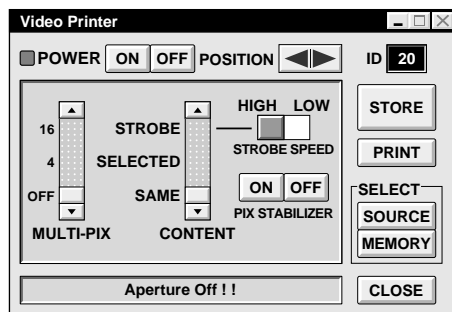
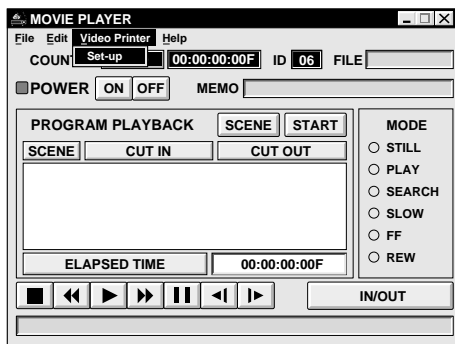
Insert print paper into the video printer and click "PRINT".

- Also refer to the video printer's instruction manual.

The following print styles are also available:

- Printing the same scene 4 or 16 times on one sheet. (Multi-Print)
- Printing various scenes on the same print sheet. (Multi-Print)
- Printing a scene within a scene. (Inset Print)
- Storing a selected number of images at short intervals and printing them on one sheet. (Strobe)

Also refer to the video printer's instruction manual.



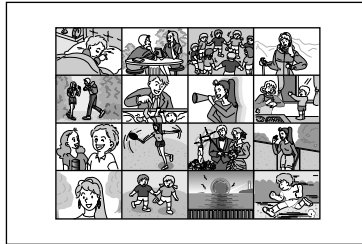
Auto Capture

Preparation

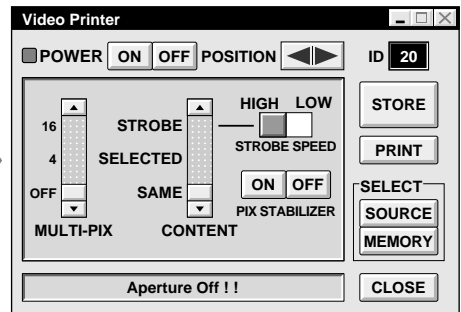
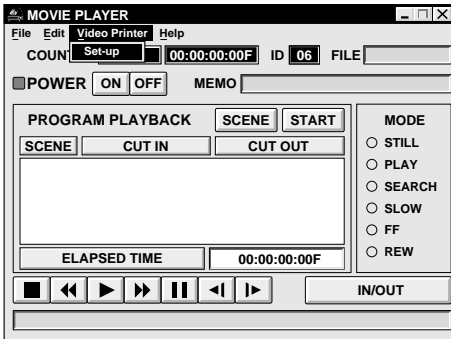
- Load the tape into the video unit.
- Open a saved file (☞ pg. 20 of the JLIP Player Pack HS-V1's instruction manual).
- Select file name (☞ pg. 20 of the JLIP Player Pack HS-V1's instruction manual).
- Prepare for printing (refer to the GV-PT2 instruction manual).
- Select desired layout using the remote control unit provided with the GV-PT2.

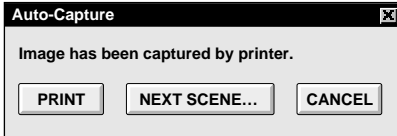
To Print Captured Video Data with Video Printer

Captured video data can be automatically scanned and printed.
You can print OFF, 4 or 16 images on one sheet.



- 1 Select "Video Printer" — "Set-up" in the MOVIE PLAYER window.
 - Video Printer window appears.
- 2 Select the number of scenes (OFF/4/16) and select "SAME" or "SELECTED" for the content.
 - Select this by clicking the buttons (▲/▼).





3 Click Title in the MOVIE PLAYER window and activate the window.

4 Select "Edit" — "Set Function" — "Auto Capture".

5 Click "START"

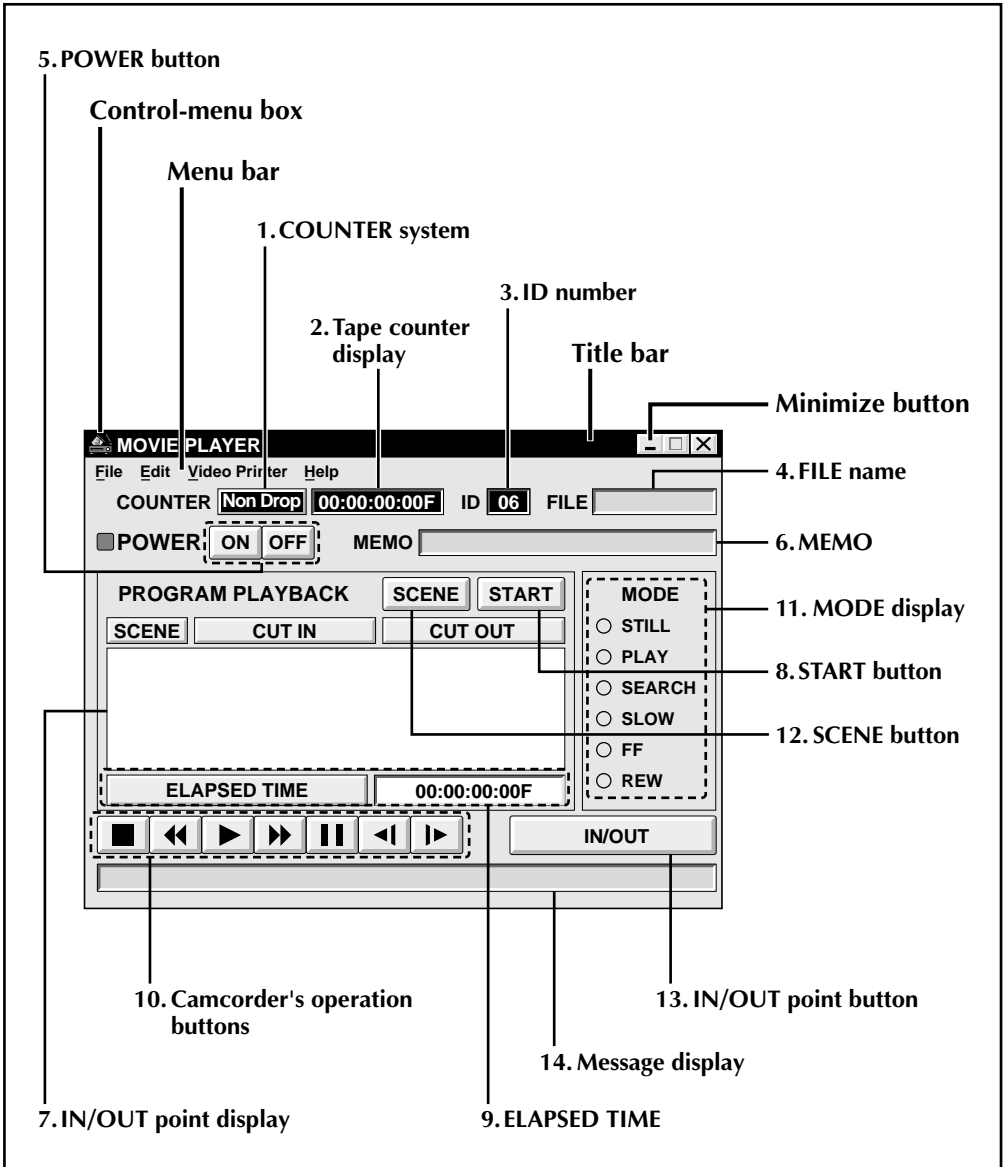
- The captured video data set first is searched and stored in the video printer.
- When the data has been stored, the message "Image has been captured by printer." appears.
- If the number of scenes was set to "OFF", or "4 or 16" in step 2 and then to "SAME", you can start printing by clicking "PRINT".
- If the number of scenes was set to "OFF", or "4 or 16" in step 2 and then to "SELECTED", click "NEXT SCENE . . .". The next scene is automatically searched and stored in the video printer.

6 Click "PRINT" to start printing.

NOTES:

To print only the cut-in scene on the edited tape

- ① Perform editing (refer to pages 16 through 18).
- ② Print (follow steps 1 through 5 above).
 - Select "Auto Capture" in step 4.
 - Click "START" in step 5. The cut-in point of Scene No. 1 is automatically searched and stored in the video printer.
 - You cannot start storing from Scene No. 2 or subsequent scenes.
 - Even if the video unit is in Stop mode, clicking "START" automatically starts playback to search the cut-in point of Scene No. 1.
 - If you want to print a particular scene only, click "SCENE" in step 5.



1. COUNTER system

2. Tape counter display

- Displays actual tape position.

ex.

00: 01: 45: 10F
(Hours : Minutes : Seconds : Frames)

3. ID number

- Displays the selected device's ID number.

4. FILE name

- Displays file name after saving the program under a new name.

ex. travel

5. POWER button

- Turns the device on and off.
- If power is not supplied to the camcorder beforehand, you can not turn the camcorder on and off by clicking this button.
- Some camcorders cannot be turned on and off by clicking this button.

6. MEMO

- If you wish to add some comment to the file, you can input it.

ex. Europe Tour

7. IN/OUT point display

- You can set up to 99 in/out points per file.

8. START button

- Starts editing. Scenes are recorded in scene's numerical order. After starting editing, this button changes to STOP button.

9. ELAPSED TIME

- Displays the total elapsed time of all the programmed scenes.

10. Camcorder's operation buttons

- Operate the camcorder.

-  **Stop button**
-  **REW/REW Search button**
-  **Play button**
-  **FF/FF Search button**
-  **Pause button**
-  **Reverse Slow button**
-  **Forward Slow button**

- To start Reverse/Forward Slow-motion Search, first click the Pause button and then the Reverse/Forward Slow button.
- Functions your camcorder does not have cannot be performed by the above buttons.
- Click "File" — "Open VCR Control Window" on menubar to call up the "VCR Control" window. You can control the video source unit from this window.

11. MODE display

- Displays the camcorder's mode when operating the above buttons.

12. SCENE button

- Plays back only one programmed scene so that you can preview it.
- Operates only the camcorder.

13. IN/OUT point button

- Registers the cut-in and cut-out points of the scene you want to dub.

14. Message display

- Displays the connected device mode, etc.

To exit from the MOVIE PLAYER window, choose "Exit" from the "File" menu.

NOTE:

If you need the "MOVIE PLAYER HELP" window, choose "Contents" from the "Help" menu.

